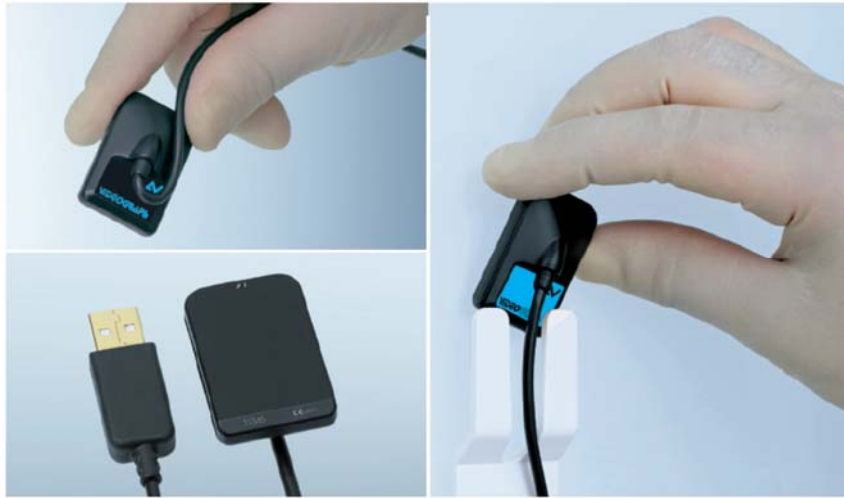


VIDEOGRAPH VIDEOGRAPH^{HD}

The easy solutions for your intraoral diagnosis



VIDEOGRAPH | VIDEOGRAPH HD



Leveraging an enlarged experience in all sectors of dental radiology, including panoramic and 3D cone beam technologies, Villa S.M. includes in its product portfolio the Videograph, a hi-tech intraoral sensor available in two different models: "regular" and "HD".

Even in the entry-level version, Videograph permits to obtain superior image quality thanks to the th. resolution of 25 lp/mm, allowing to properly detect any district of patient's mouth: its use is therefore particularly appropriate for all General Dentistry applications, such as caries detection. On the other hand, for all applications requiring high detail visibility, Videograph HD goes a step further in image definition, thanks to the Caesium Iodide technology of its scintillator screen: the top level value of the Contrast Transfer Function makes the most of the sensor's technology, making it an ideal tool for Endodontics or Implantology. On both models of sensor, our powerful imaging software, delivered as standard, is able to optimize the quality of the acquired images, thanks to accurate processing tools and filters for image enhancement.

Any Videograph sensor features direct USB connection, without any intermediate electronic box, to maximize user friendliness. Its technology permits to work promptly with our Endograph DC intraoral generators, as well as with any other type of X-ray unit, also from other manufacturers. As long as we care for your patients, comfort is granted by the rounded sensor's corners, while safety is achieved thanks to the single-use protective sheaths and to the sensor's capacity to be disinfected by immersion.

TECHNICAL DATA	Videograph	Videograph HD
External dimensions detector (length x width x thickness)	38,6 x 24,7 x 5,2 mm (#1) - 43,2 x 30,8 x 5,2 mm (#2) 1,6 x 1,0 x 0,2 in (#1) - 1,7 x 1,2 x 0,2 in (#2)	
Active surface in size	30 x 20 mm (600 mm ²) (#1) - 34 x 26 mm (884 mm ²) (#2) 1,2 x 0,8 in (0,96 in ²) (#1) - 1,3 x 1,0 in (1,3 in ²) (#2)	
Active surface in pixels	1500 x 1000 pixels (#1) - 1700 x 1300 pixels (#2)	
Theoretical detector resolution	25 lp/mm	25 lp/mm
Scintillator Technology	Gadox	Caesium Iodide (CsI)
CTF - Contrast Transfer Function (at 70 kVp - 1,5 mmt ABS filter)	8·10 ⁻² @ 10 lp/mm spatial frequency	25·10 ⁻² @ 10 lp/mm spatial frequency
Output - LSB (at 70 kVp - 1,5 mmt ABS filter)	1300 @ 100 µGy	1900 @ 100 µGy
USB cable length	3 m	3 m
Gray levels	14 bits (16384 gray levels)	
Connection	Standard USB: USB 2.0 High-Speed (480Mbit/s) and USB 3.0.	

CMOS
CMOS sensor technology,
for an excellent price-performance ratio

HD
High image definition,
granted by the theoretical resolution of 25 lp/mm

USB connection,
making it an immediate tool for instantaneous diagnosis

Direct connection to computer,
to make life easier to users and patients

Rounded corners,
as patients comfort is the key for a precise diagnosis

Disinfectable by immersion,
in order to preserve the safety of the patient

Multi-layer technology,
with fiber optic + scintillator + shock absorption area

2 sizes available,
to meet a complete range of application needs

For all generators,
from the newest intraoral units to the previous generation ones

Sensor positioner,
included as standard on HD version



Villa Sistemi Medicali Spa
20090 Buccinasco (MI) Italy
Via delle Azalee, 3
Tel. +39 02 48859.1
Fax +39 02 4881.844
www.villasm.com
vsminfo@villasm.com

Villa Radiology Systems
91 Willenbrock Rd. B-1
Oxford, CT 06478 - USA
Tel. +1 203 262 8836
www.villaus.com



AMT

Marketed in India by:

AMT DENTAL PVT LTD

Shri Ambika Heritage, Office No. 102, 1st Floor, Plot – 1, Sector – 1,

Kharghar – 410 210, Navi Mumbai, Maharashtra, India

Ph: 022 65141277, Mo. +91 9322673077